



CenterPointEnergy.com

2254

CUSTOMER COUNTY BARN PRECINCT 3

SERVICE ADDRESS 405 Commerce St, Palacios, TX 77465

MAR 30 2022

ACCOUNT NUMBER 2904139-9/32122 DATE MAILED Mar 24, 2022

DATE DUE Apr 08, 2022 AMOUNT DUE \$ 38.78

Gas leak or emergency

Leave immediately, then call 888-876-5786, 24 hours a day

Customer service

800-427-7142 toll-free Monday - Friday, 7 am - 7 pm

Call before you dig

Call 811 24 hours a day

Comments

PO Box 2628 Houston, TX 77252-2628

Your usage in a glance

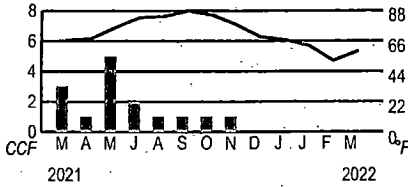


Table with 4 columns: Previous usage, Usage this month, Average daily temperature, and a comparison table for CCF used, average daily gas use, average daily temperature, and days in billing period.

To better understand your home energy usage and learn energy savings tips, visit CenterPointEnergy.com/myenergyanalyzer

Rates have been reduced due to a Tax Refund. For more information, please visit CenterPointEnergy.com/TXTaxReform.

To report gas leaks, carbon monoxide and other gas emergencies, please call 1-888-876-5786. We appreciate your understanding that billing inquiries cannot be answered on this line.

The cost of gas line item reflects higher commodity prices due to increases in the market price of natural gas, and the price we pay for natural gas is the same price we charge our customers - with no markup.

Pay your next bill without lifting a finger. To enroll in AutoPay, just sign and date the back of your bill stub and return to us with a check for your payment amount. It's that easy!

ACCOUNT SUMMARY

Table showing account summary: Previous gas amount due (\$ 38.47), Payment Mar 18, 2022 (- 38.47), Current gas charges (Details on page 2) (+ 38.78), Total amount due (\$ 38.78)

Thank you!

APPROVED COUNTY AUDITOR

Handwritten signature/initials

01054410614 ATT

How to pay your bill

Online Visit CenterPointEnergy.com/paybill Pay immediately, schedule a payment or set up automatic monthly payments.

Phone Call 800-427-7142 and make a payment using your checking or savings account, or by debit or credit card.

In person To find a payment location, visit: CenterPointEnergy.com/paybill or call 800-427-7142.

Mail Return the payment stub below, with your check or money order, using the return envelope.

Please keep this portion for your records

Please return this portion with your payment. Please do not include letters or notes.



RECEIVED MAR 29 2022

BY: [Signature]

00001783 01 AV 0.42 1

ACCOUNT NUMBER 2904139-9

Enroll in AutoPay today. See form on the back of this stub.

DATE DUE Apr 08, 2022 AMOUNT DUE \$ 38.78

Write account number on check and make payable to CenterPoint Energy.

\$ 38.78

Please enter amount of your payment

COUNTY BARN PRECINCT 3 25000 STATE HIGHWAY 35 S PALACIOS, TX 77465-1920



CENTERPOINT ENERGY PO BOX 4981 HOUSTON TX 77210-4981

0700218215122

008200000290413999000000038780000000387880

CUSTOMER
COUNTY BARN PRECINCT 3

ACCOUNT NUMBER
2904139-9

DATE DUE

Page 2 of 4
Apr 08, 2022

DATE MAILED
Mar 24, 2022

AMOUNT DUE

\$ 38.78

SERVICE ADDRESS
405 Commerce St, Palacios, TX 77465

DEFINITIONS

CCF 1 CCF = 100 cubic feet of gas. This is how we measure your monthly usage.

Customer charge and base amount. Covers fixed costs for reading meters, issuing bills, maintaining facilities and gas lines, postage, etc. These costs occur even if you do not use gas during a billing period.

Gas Cost Adjustment (GCA) is the cost CenterPoint Energy pays for the gas it delivers to its customers.

Storage inventory charge allows the Company the opportunity to recover the regulated carrying cost of its investment in storage.

Reimbursement of local franchise fee is a fee paid to the city for the company's use of right-of-way in streets and alleys.

Reimbursement of state gross receipts tax is a tax imposed by the State of Texas on each utility company located in an incorporated city having a population of more than 1,000.

For a more detailed description of each of the terms used on your bill, please visit CenterPointEnergy.com/definitions or call Customer Support at 800-427-7142.

Current gas charges

Rate: GSS-2097-U-GRIP 2021@14.95 Pressure Base

Meter Number **Day Billing Period**
3828200587513 32

Billing Period	Current Reading	- Previous Reading	= Total	x	Combined pressure factor	Adjusted Usage
02/17/22 - 03/21/22	9443	9443	0		1.14020	0 CCF
Customer charge *						\$ 37.05
Tax refund						-0.62
Reimbursement of local franchise fee						1.94
Reimbursement of State GRT						0.41
Total current charges						\$ 38.78

The customer charge includes the current GRIP surcharge of \$4.78.

Your account, managed your way

Sign up at CenterPointEnergy.com/myaccount

- **24/7 online account access.** View and/or pay your bill, view usage history, sign up for account services and much more.
- **Go paperless.** Receive an email when your bill is ready to view and pay. Get convenience, get rid of clutter.

- **Pay automatically.** Set up AutoPay by signing and returning the form below with your check payment. It's that easy!
- **Even out the highs and lows of your monthly bills.** Enroll in Average Monthly Billing and spread your natural gas costs throughout the year.
- **Get bill reminders.** Choose text or email, up to five days before your bill is due.

- **Other services.** Report a payment made at a payment location, set up a payment extension and much more. View options from your online account or visit CenterPointEnergy.com/selfservice if you'd prefer not to register.
- **Moving?** Please call us at 800-427-7142 at least two weeks before you move, or complete the forms at CenterPointEnergy.com/selfservice

Mail payments to CenterPoint Energy, PO Box 4981, Houston, TX 77210-4981

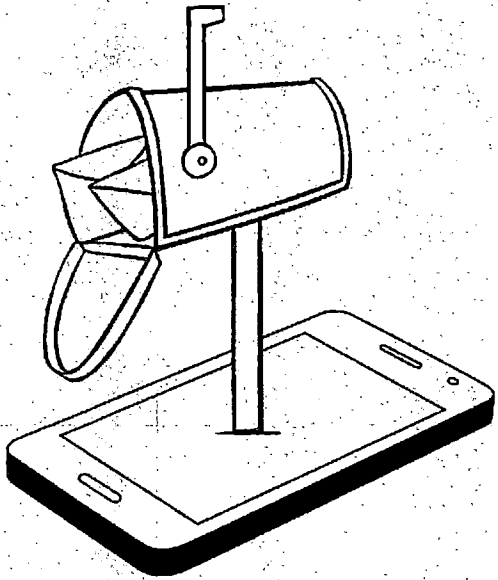
Enroll in AutoPay and your monthly payment will be automatically deducted from your bank account.

To enroll, sign and date this form and return with your check payment. Money orders do not qualify for enrollment. Your next bill will be automatically deducted from the account listed on your check. For more information and to enroll electronically, go to CenterPointEnergy.com/autopay.

I authorize CenterPoint Energy to automatically deduct from the checking account shown on my enclosed check all future payments for my CenterPoint Energy bills. I will notify CenterPoint Energy if I decide to cancel my use of AutoPay. CenterPoint Energy also has the right to discontinue my AutoPay enrollment. Once I enroll, I understand that any past due balances will be drafted from my account three days after my application is processed.

Account holder's signature

Date

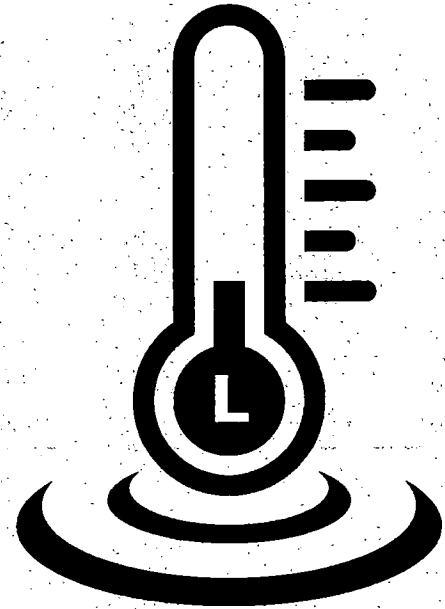


Isn't it time you switched mailboxes?

Kick the clutter with secure, convenient **Paperless Billing**. You'll get monthly reminders five days before your bill is due. Plus, you can see and print your bill with all details and graphs from your *My Account* page.

CenterPointEnergy.com/MyAccount

162353_CNP



Keep safe and save money, too!

Hot tap water is a major cause of scald injuries to children and the elderly.* So set your water heater temperature between 120 F to 125 F ("Low" or "L" on some dials) to avoid scalding and help keep water heating costs low.

CenterPointEnergy.com/GasSafety

*The Consumer Product Safety Commission

220119-06

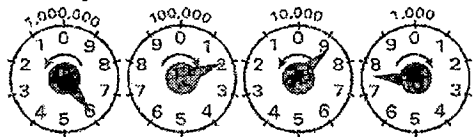


A safety message from CenterPoint Energy

If you smell natural gas, leave immediately. Call our Gas Leak Hotline at 800-296-9815. Do not use or store flammable products such as gasoline in the same room or area near the water heater or any other gas appliance.

Si percibes un olor a gas natural, sal inmediatamente. Llama a nuestra línea telefónica para fugas de gas a uno de los números de teléfono que aparecen arriba. No use ni almacene productos inflamables tales como gasolina en la misma habitación o en áreas cercanas a un calentador de agua u otro tipo de aparato a gas.

How to read your meter



The following is an example of how to read a typical meter index.

Look at the four dials with their curved arrows. Read from right to left as follows:

1. Read the "thousand-foot" dial as 7, the last number that the pointer passed. Note that the curved arrow on the dial shows a clockwise movement of the pointer.
2. Read the next dial, the "100-thousand" dial. The curved arrow on the dial above shows a

counterclockwise direction. The pointer is near the 9, but to be sure whether to read it as that number or the lower number 8, the previously mentioned "same or lower number rule" must be applied. Since the pointer in the "thousand-foot" dial to the right is nearer the 3 and the pointer has not reached the 0, the "100-thousand" dial should be read as 8.

3. Read the "100-thousand" dial, it seems to point to 2. Double-check by using the rule above. Since the pointer of the "100-thousand" dial is between 8 and 9, take the lower reading number, 1, for the "100-thousand" dial.

4. Read the left-most dial, the "million-foot" dial. The pointer is near the 6. Using the "same or lower number rule", we find the pointer on the dial to the right is between 1 and 2, so we read the "million-foot" dial exactly as the number it is on or near, 6.

The entire meter reading is 6187.

CUSTOMER
 COUNTY BARN PRECINCT 3

ACCOUNT NUMBER
 6401111506-6

DATE DUE

Apr 08, 2022

DATE MAILED
 Mar 24, 2022

AMOUNT DUE

\$ 36.43

SERVICE ADDRESS
 25000 State Highway 35 S, Palacios, TX 77465-1920

DEFINITIONS

CCF 1 CCF = 100 cubic feet of gas. This is how we measure your monthly usage.

Customer charge and base amount. Covers fixed costs for reading meters, issuing bills, maintaining facilities and gas lines, postage, etc. These costs occur even if you do not use gas during a billing period.

Gas Cost Adjustment (GCA) is the cost CenterPoint Energy pays for the gas it delivers to its customers.

Storage inventory charge allows the Company the opportunity to recover the regulated carrying cost of its investment in storage.

Reimbursement of local franchise fee is a fee paid to the city for the company's use of right-of-way in streets and alleys.

Reimbursement of state gross receipts tax is a tax imposed by the State of Texas on each utility company located in an incorporated city having a population of more than 1,000.

For a more detailed description of each of the terms used on your bill, please visit CenterPointEnergy.com/definitions or call Customer Support at 800-427-7142.

Current gas charges

Rate: GSS-2097-U-GRIP 2021@14.95 Pressure Base

Meter Number **Day Billing Period**
 3731506736444 32

Billing Period	Current Reading	-	Previous Reading	=	Usage
02/17/22 - 03/21/22	550		550		0 CCF
Customer charge *					\$ 37.05
Tax refund					- 0.62
Total current charges					\$ 36.43

The customer charge includes the current GRIP surcharge of \$4.78.

Your account, managed your way

Sign up at CenterPointEnergy.com/myaccount

- **24/7 online account access.** View and/or pay your bill, view usage history, sign up for account services and much more.
- **Go paperless.** Receive an email when your bill is ready to view and pay. Get convenience, get rid of clutter.

- **Pay automatically.** Set up AutoPay by signing and returning the form below with your check payment. It's that easy!
- **Even out the highs and lows of your monthly bills.** Enroll in Average Monthly Billing and spread your natural gas costs throughout the year.
- **Get bill reminders.** Choose text or email, up to five days before your bill is due.

- **Other services.** Report a payment made at a payment location, set up a payment extension and much more. View options from your online account or visit CenterPointEnergy.com/selfservice if you'd prefer not to register.
- **Moving?** Please call us at 800-427-7142 at least two weeks before you move, or complete the forms at CenterPointEnergy.com/selfservice

Mail payments to CenterPoint Energy, PO Box 4981, Houston, TX 77210-4981

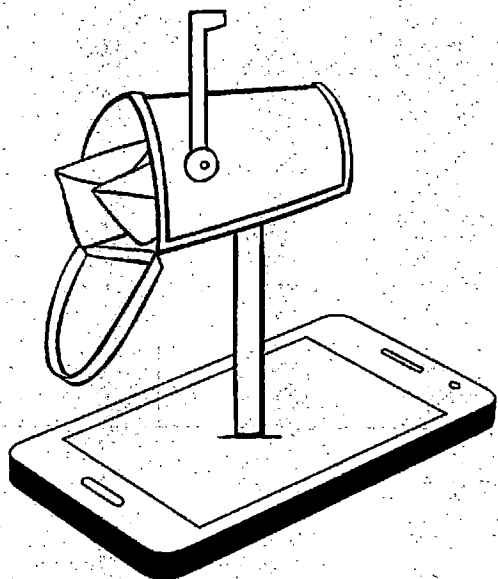
Enroll in AutoPay and your monthly payment will be automatically deducted from your bank account.

To enroll, sign and date this form and return with your check payment. Money orders do not qualify for enrollment. Your next bill will be automatically deducted from the account listed on your check. For more information and to enroll electronically, go to CenterPointEnergy.com/autopay.

I authorize CenterPoint Energy to automatically deduct from the checking account shown on my enclosed check all future payments for my CenterPoint Energy bills. I will notify CenterPoint Energy if I decide to cancel my use of AutoPay. CenterPoint Energy also has the right to discontinue my AutoPay enrollment. Once I enroll, I understand that any past due balances will be drafted from my account three days after my application is processed.

Account holder's signature

Date

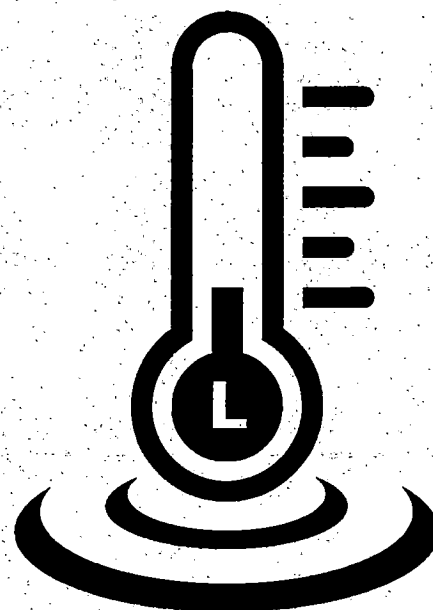


Isn't it time you switched mailboxes?

Kick the clutter with secure, convenient **Paperless Billing**. You'll get monthly reminders five days before your bill is due. Plus, you can see and print your bill with all details and graphs from your *My Account* page.

CenterPointEnergy.com/MyAccount

162353_CNP



Keep safe and save money, too!

Hot tap water is a major cause of scald injuries to children and the elderly.* So set your water heater temperature between 120 F to 125 F ("Low" or "L" on some dials) to avoid scalding and help keep water heating costs low.

CenterPointEnergy.com/GasSafety

*The Consumer Product Safety Commission

220119-06



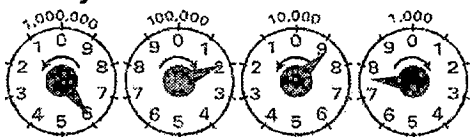
March, 2022

A safety message from CenterPoint Energy

If you smell natural gas, leave immediately. Call our Gas Leak Hotline at 800-296-9815. Do not use or store flammable products such as gasoline in the same room or area near the water heater or any other gas appliance.

Si percibes un olor a gas natural, sal inmediatamente. Llama a nuestra línea telefónica para fugas de gas a uno de los números de teléfono que aparecen arriba. No use ni almacene productos inflamables tales como gasolina en la misma habitación o en áreas cercanas a un calentador de agua u otro tipo de aparato a gas.

How to read your meter



The following is an example of how to read a typical meter index.

Look at the four dials with their curved arrows. Read from right to left as follows:

1. Read the "thousand-foot" dial as 7, the last number that the pointer passed. Note that the curved arrow on the dial shows a clockwise movement of the pointer.
2. Read the next dial, the "100-thousand" dial. The curved arrow on the dial above shows a

counterclockwise direction. The pointer is near the 9, but to be sure whether to read it as that number or the lower number 8, the previously mentioned "same or lower number rule" must be applied. Since the pointer in the "thousand-foot" dial to the right is nearer the 8 and the pointer has not reached the 0, the "100-thousand" dial should be read as 8.

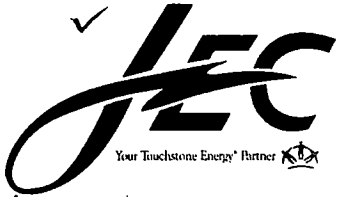
3. Read the "100-thousand" dial, it seems to point to 2. Double-check by using the rule above. Since the pointer of the "10-thousand" dial is between 8 and 9, take the lower reading number, 1, for the "100-thousand" dial.

4. Read the left-most dial, the "million-foot" dial. The pointer is near the 6. Using the "same or lower number rule", we find the pointer on the dial to the right is between 1 and 2, so we read the "million-foot" dial exactly as the number it is on or near, 6.

The entire meter reading is 6187.

✓ P.O. Box 1189
Edna, TX 77957-1189
Edna (361) 771-4400
Bay City (979) 245-3029

370
MAR 30 2022



Office Hours:
Monday - Friday
8:00 a.m. - 5:00 p.m.

Transfer Station ✓

ACCOUNT #	ACCOUNT NAME	RATE	PCRF	BILL TYPE	SERVICE ADDRESS	TELEPHONE #
13413002	MATAGORDA COUNTY (LANDFILL)	30	0.075000	0	MAT. CO TRANSFER STATION	(979) 244-2717

SERVICE PERIOD		NO. DAYS	READ TYPE	METER READING		METER NUMBER	MULT	KILOWATT USAGE	CHARGES
FROM	TO			PREVIOUS	PRESENT				
02/17/22	03/18/22 ✓	29	2	187099 ✓	188606	10300035	1	1507	235.71

THANK YOU FOR YOUR PAYMENT 03/11/22
 PREVIOUS AMOUNT DUE -344.46
 TOTAL AMOUNT DUE 235.71

RECEIVED
MAR 29 2022

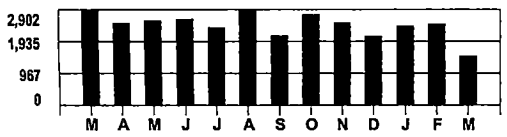
010-54410-595
Lina Krobot

APPROVED
COUNTY AUDITOR
AB Krot

BY: AB

COMPARISONS	DAYS SERVICE	KWH USED	AVG. KWH/DAY	COST PER DAY	TOTAL NOW DUE		
CURRENT BILLING PERIOD	29	1507	52	8.13	235.71 ✓		
PREVIOUS BILLING PERIOD	30	2471	82	11.48			
SAME PERIOD LAST YEAR	28	2890	103	13.36	AFTER DUE DATE PAY 235.71		

Your Electricity Use Over The Last 13 Months



FOR LOAD SHED AND CRITICAL CARE INFORMATION VISIT OUR WEBSITE WWW.MYJEC.COOP/LOAD-SHEDCRITICAL-CARE *PAYMENT MUST BE RECEIVED BY 5PM ON DUE DATE*

VISIT OUR WEBSITE AT: www.myjec.coop
DOWNLOAD THE JEC MOBILE APP FROM THE IOS APP STORE OR GOOGLE PLAY

- | Bill Type | Read Type |
|---------------------------|----------------------|
| 0 NORMAL | 0 COMPUTER ESTIMATED |
| 1 ESTIMATED | 1 CONSUMER READ |
| 2 MINIMUM ESTIMATED | 2 COOP READ |
| 3 MINIMUM | 3 CHARGEABLE READ |
| 4 FINAL | 4 COOP READ - FIELD |
| 5 PRORATED | 5 NEW CONNECT |
| 6 PRORATED MINIMUM | |
| 7 BUDGET BILL | |
| 8 WEATHERIZATION/CONTRACT | |
| 9 WAITING TO BE BILLED | |

777



MATAGORDA WASTE DISPOSAL & WATER SUPPLY CORPORATION
P.O. BOX 196
MATAGORDA, TEXAS 77457-0196
(979) 863-7261

MAR 28 2022

FIRST-CLASS MAIL
U.S. POSTAGE
PAID
MATAGORDA TX 77457
PERMIT NO. 4

TYPE OF SERVICE	METER READING		USED	CHARGES
	PRESENT	PREVIOUS		
Water	623890	623890 ✓	0	47.50

Matagorda WD & WSC

CUSTOMER		DUE DATE
ROUTE	ACCOUNT	PAST DUE AFTER THIS DATE
11	411	4/10/22
TOTAL DUE UPON RECEIPT		PAST DUE AMOUNT
47.50		47.50

010-54410-462

APPROVED
COUNTY AUDITOR
LR SB KW

MAIL THIS STUB WITH YOUR PAYMENT

<https://mwdwsc.myruralwater.com>

Service From 2/17/2022 TO 3/15/2022 ACCOUNT # 411 3/16/22

METER READ MONTH	DAY	CLASS	TOTAL DUE UPON RECEIPT	LATE CHARGE AFTER DUE DATE	PAST DUE AMOUNT
3	15	3	47.50 ✓	0.00	47.50

Matagorda Co. JP Office #2
2200 7th St.
3rd Floor
Bay City TX 77414

This bill is due by the 10th of the month following billing. Service will be disconnected on the 10th day after the delinquent notice is mailed and a \$50.00 reconnection charge is applied. Service will be restored after all past due charges are paid.

pd 3/1/22 ck#101979

RECEIVED
MAR 23 2022

BY: SB